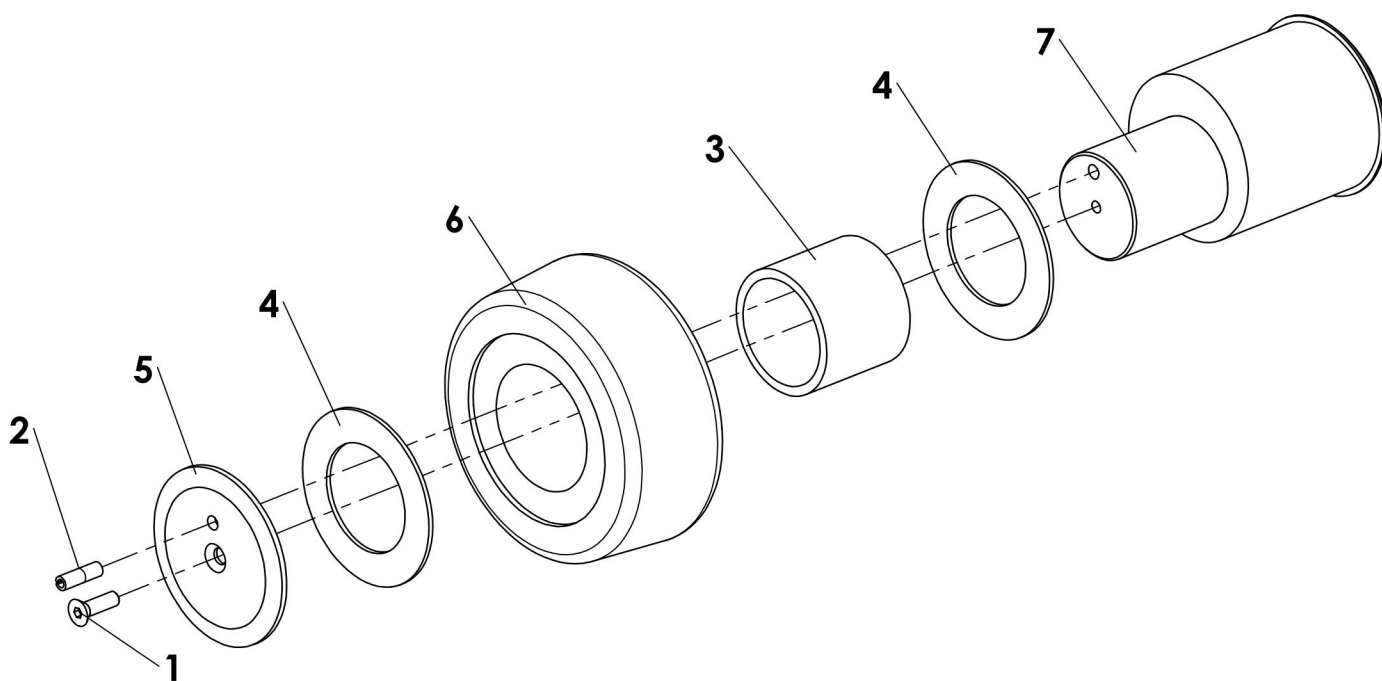



REP	P/N	REV	Désignation FR/EN	Qte
1	3100149		Vis TFHC INOX -TFHC Stainless steel Screw M6x16	1
2	3500116	/	Goupille élastique Ø6x20 Spring pin stainless Ø6x20	1
3	4200418	REL	BAG GARMAXREF 455345GMGGB BUSHING 455345GM GGB	1
4	4200419	REL	RONDELLE KA REF WC45KA GGB WASHER	2
5	9207443	REL	ARRET DE GALET TROLLEY APRON	1
6	9207444	A	GALET DE TROLLEY TROLLEY ROLLER	1
7	9207452	B	AXE GALET SIMPLE	1



B	Mise à jour du plan - Uptade the plan	24/07/2012	CB	DG	
REV.	DESCRIPTION	DATE	Modified by	Checked by	ID

	Tolérances générales Voir AQIT 008		<div>#</div>	MARQUAGE PIECE P/N + Rev	
Matière	-	Masse (Kg)	Format	Ech.	
Protection	.	-	A4	1:3	

S/E GALLET ASSY ROLLER

9207453	B	1/1
P/N	Rev.	Folio